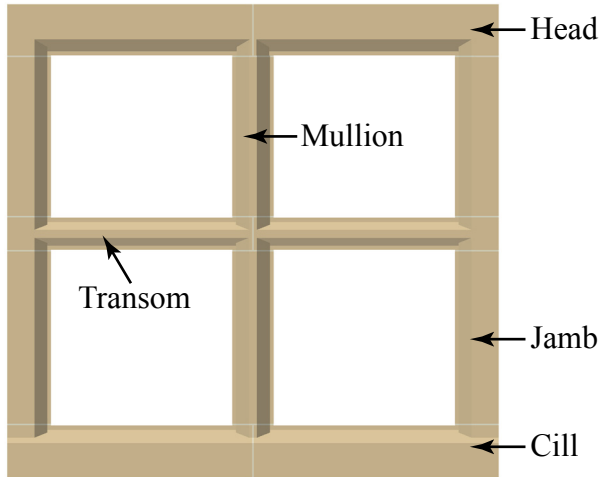
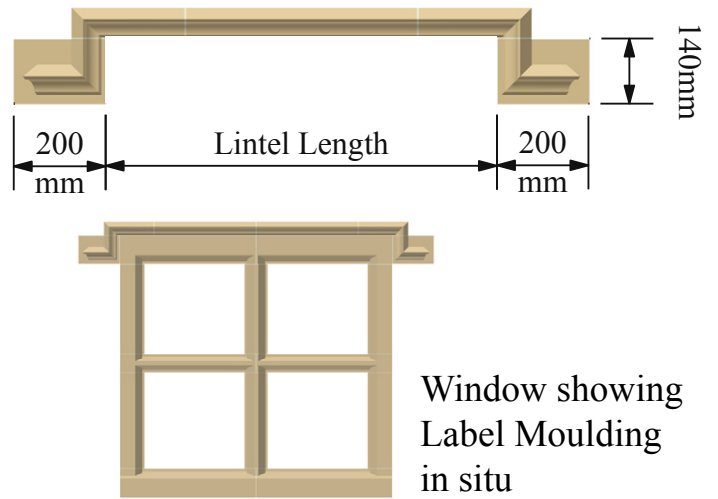


Information Sheet
Traditional Mullion Window Surrounds

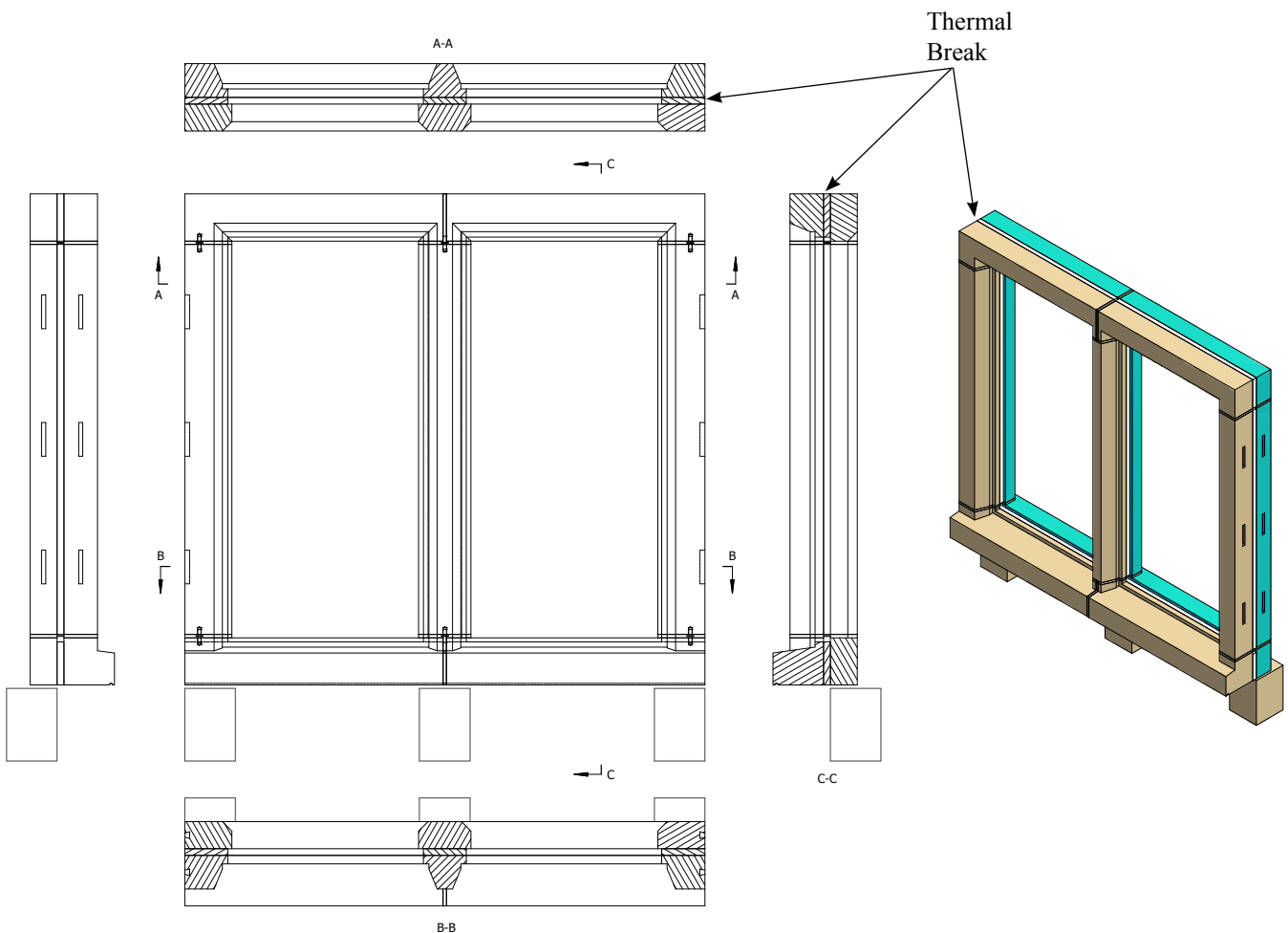
Window Component Names



Label Moulding



Window with Thermal Break



Information Sheet
Traditional Mullion Window Surrounds

Information Thorverton Stone requires to manufacture a Window Surround

The overall dimensions for the window including height and width.

The opening / window frame sizes.

The cill section you require.

The Lintel section you require.

The number of 'lights' for each window (the above left picture shows a two light window).

Do your windows require transoms (horizontal cross pieces to split the window top & bottom) ?

Useful Information

Our traditional window surrounds with thermal break dramatically reduce heat loss through the surround. They typically show a U value of 1.29 W(m²K) compared to a U value of 11 W(m²K) for an un-insulated surround. *Note: lower U value numbers equal greater heat retention.*

We will happily make a window to your design should you wish. For thermal break window surrounds, this may take longer than non-insulated surrounds.

Label moulding is optional.

Jamb stones are steel reinforced and dovetail slots are cast in as standard. If you require any other type of fixing to be cast in, please ask.

Lintels are steel reinforced.

Mullions are steel reinforced.

Transoms are steel reinforced.