

Information Sheet

Fixings

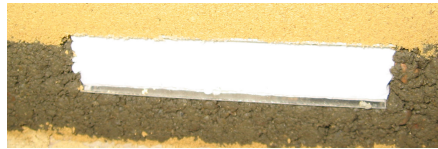
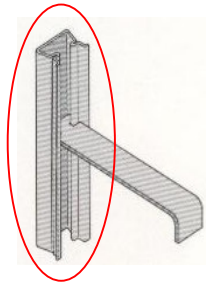
Standard fixings used by Thorverton Stone

Many types of fixing can be cast into the stone during the manufacturing process. The designer has freedom of choice as to what type of fixing is required and where it is positioned within the stone. To this end, it is vital that the stone designer pays particular attention to any fixing issues before ordering, so that it may be incorporated into the stone at the manufacturing stage. This may prevent extra work and delays on site.

Although not typical, fixings may form part of the structural reinforcement of the stone.

At Thorverton Stone, some stones have fixings cast in as standard

- [jamb stones](#) are made with dovetail slots as standard.
- [large stones](#) will have lifting aides cast in (see the Lifting information sheet)



Dovetail Slot
cast in
as standard